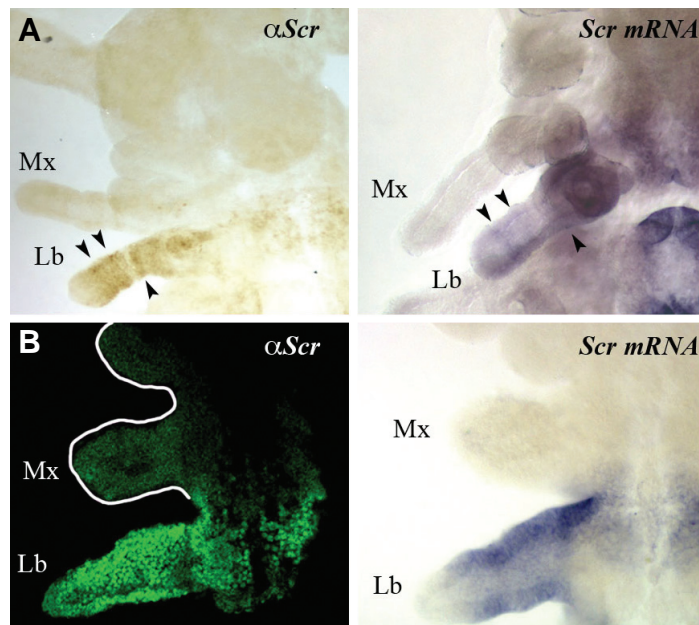


SUPPLEMENTARY MATERIAL

corresponding to:

**Evolving expression patterns of the
homeotic gene *Scr* in insects**

KARLA D. PASSALACQUA, STEVEN HRYCAJ, NAJMUS MAHFOOZ and ALEKSANDAR POPADIC*



Supplementary Fig. S1. Comparison of SCR protein and mRNA patterning in *Periplaneta* and *Oncopeltus*. (A) SCR protein (left) and mRNA (right) expression in similarly staged embryos of the cockroach *Periplaneta americana*. Arrowheads indicate striped domains of expression that appear at both the protein and mRNA level in the labial appendage. Neither SCR protein nor mRNA is detected in the maxillary appendages. (B) SCR protein (left) and mRNA (right) expression in similarly staged embryos of the milkweed bug *Oncopeltus fasciatus*. In both instances, strong expression is detected in the labial appendage with moderate signal in the mid ventral region of this segment. There is also additional protein and mRNA signal at the lateral edge between the maxillary and labial appendages. Abbreviations: Mx, maxillae; Lb, labium.

Further Related Reading, published previously in the *Int. J. Dev. Biol.*

See Special Issue **Pattern Formation** edited by Michael K. Richardson and Cheng-Ming Chuong at:
<http://www.ijdb.ehu.es/web/contents.php?vol=53&issue=5-6>

Function and specificity of *Hox* genes

David Foronda, Luis F. de Navas, Daniel L. Garaulet and Ernesto Sánchez-Herrero
Int. J. Dev. Biol. (2009) 53: 1409-1419

Evolution of the *Hox/ParaHox* gene clusters

David E K Ferrier and Carolina Minguillón
Int. J. Dev. Biol. (2003) 47: 605-611

The origin and evolution of appendages.

Alessandro Minelli
Int. J. Dev. Biol. (2003) 47: 573-581

Understanding the genetic basis of morphological evolution: the role of homeotic genes in the diversification of the arthropod bauplan

A Popadic, A Abzhanov, D Rusch and T C Kaufman
Int. J. Dev. Biol. (1998) 42: 453-461

Implications of the spatial and temporal regulation of *Hox* genes on development and evolution

J Castelli-Gair
Int. J. Dev. Biol. (1998) 42: 437-444

5 yr ISI Impact Factor (2008) = 3.271

