

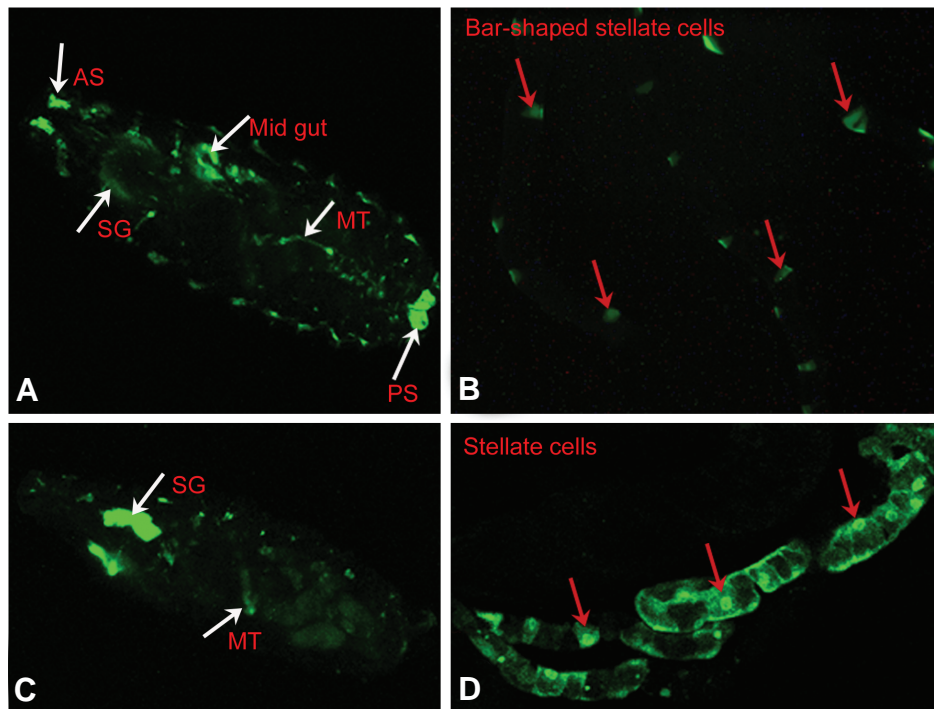
doi: 10.1387/ijdb.092910ng

**SUPPLEMENTARY MATERIAL**

**corresponding to:**

**Ecdysone signaling is required for proper organization and  
fluid secretion of stellate cells in the  
Malpighian tubules of *Drosophila melanogaster***

NAVEEN-KUMAR GAUTAM and MADHU TAPADIA\*



**Supplementary Fig. S1. Expression domain of Gal4 c649 and c724.** Each Gal4 was crossed with UAS GFP to observe the expression during embryonic and early larval stages. The expression of each Gal4 in Malpighian tubules (MT) and salivary gland starts during embryogenesis. Apart from this Gal4 c649 expresses in proventriculus, anterior spiracle, visceral musculature, mid gut, anal plate while c724 expresses at visceral musculature only at 1<sup>st</sup> instar. **(A)** The expression domains of c649 at 1<sup>st</sup> instar and **(B)** Bar shaped stellate cells in MT. **(C)** Expression domain of c724 at 1<sup>st</sup> instar and **(D)** stellate cells in MT. The abbreviation used in Figure 6 is as follow: Anterior Spiracle (AS), Salivary gland (SG), Malpighian tubule (MT), Anal Plate (AP), Visceral musculature (VM).

### Further Related Reading, published previously in the *Int. J. Dev. Biol.*

See Special Issue **Pattern Formation** edited by Michael K. Richardson and Cheng-Ming Chuong at:  
<http://www.ijdb.ehu.es/web/contents.php?vol=53&issue=5-6>

#### Epithelial-Mesenchymal Transitions in development and disease: old views and new perspectives

M. Angela Nieto  
*Int. J. Dev. Biol.* (2005) 52: 2410-2410

#### Regulation of cell adhesion and migration in lens development

Peggy S. Zelenka  
*Int. J. Dev. Biol.* (2004) 48: 857-865

#### Ventral nerve cord remodeling in a stingless bee (*Melipona quadrifasciata anthidioides*, Hymenoptera, Apidae) depends on ecdysteroid fluctuation and programmed cell death

Lucimara Z. Pinto, Marcela A. F. B. Laure, Marcia M. G. Bitondi, K. Hartfelder and Zila L. P. Simoes  
*Int. J. Dev. Biol.* (2003) 47: 385-388

#### Regulation of cell migration during tracheal development in *Drosophila melanogaster*

V. Petit, C. Ribeiro, A. Ebner and M. Affolter  
*Int. J. Dev. Biol.* (2002) 46: 125-132

#### Integrin regulatory switching in development: oscillation of beta 5 integrin mRNA expression during epithelial-mesenchymal interactions in tooth development

S. Yamada, K. M. Yamada and K. E. Brown  
*Int. J. Dev. Biol.* (1994) 38: 553-556

5 yr ISI Impact Factor (2008) = 3.271

