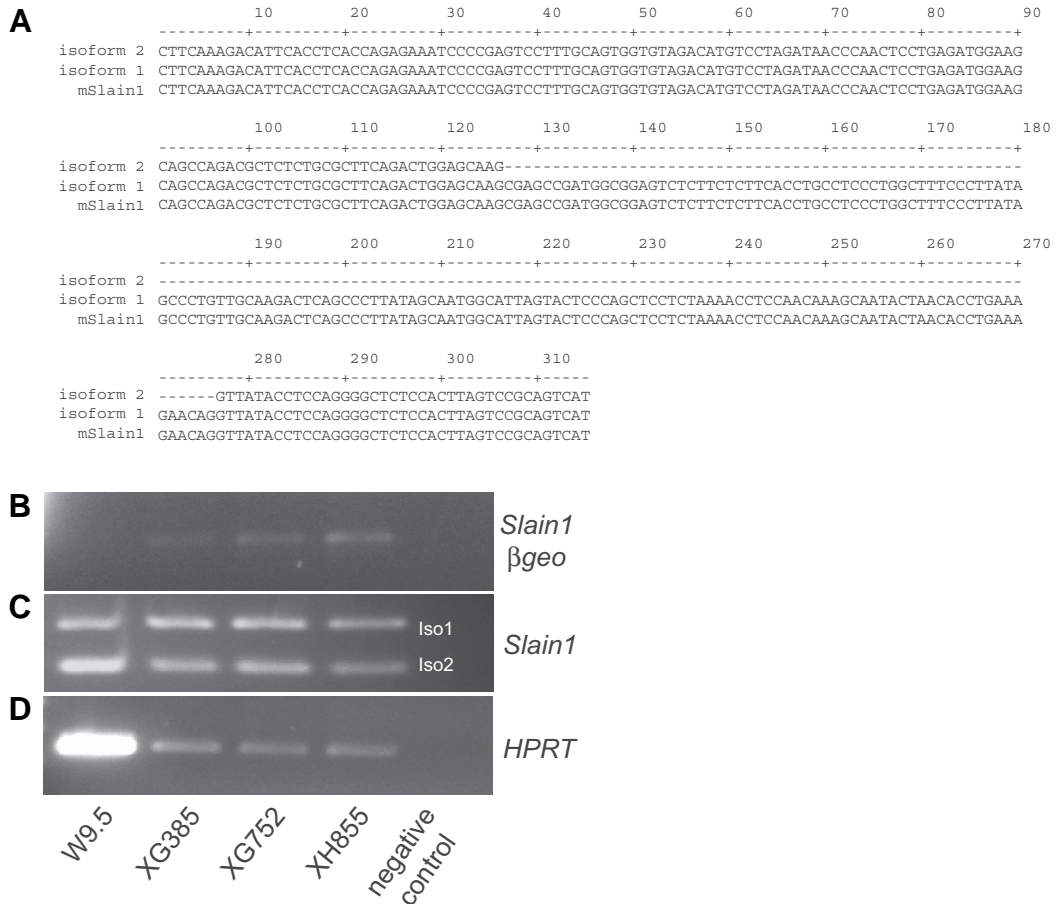


SUPPLEMENTARY MATERIAL

corresponding to:

**Expression from a β geo gene trap in the *Slain1*
gene locus is predominantly associated with the
developing nervous system**

CLAIRE E. HIRST, SUE-MEI LIM, LLOYD A. PEREIRA, ROBYN A. MAYBERRY,
EDOUARD G. STANLEY and ANDREW G. ELEFANTY*



Supplementary Fig 1. Analysis of *Slain1-βgeo* transcripts in mouse embryonic stem cells. (A) Alignment of sequences of isoform 1 and 2 of mouse *Slain1* amplified from W9.5 mouse embryonic stem cells and compared to the *mSlain1* reference sequence. **(B-D)** RT-PCR analysis of *Slain1-βgeo* transcripts compared to *HPRT* expression. **(B)** Detection of the *Slain1-βgeo* transcripts using primers in exon 2 and *βgeo* in the gene trapped heterozygous lines (XG385, XG752 and XH855), **(C)** Amplification of isoforms 1 and 2 of mouse *Slain1* using primers in exon 2 and 4 (primers as described in Fig. 1).