

doi: 10.1387/ijdb.113487zc

SUPPLEMENTARY MATERIAL

corresponding to:

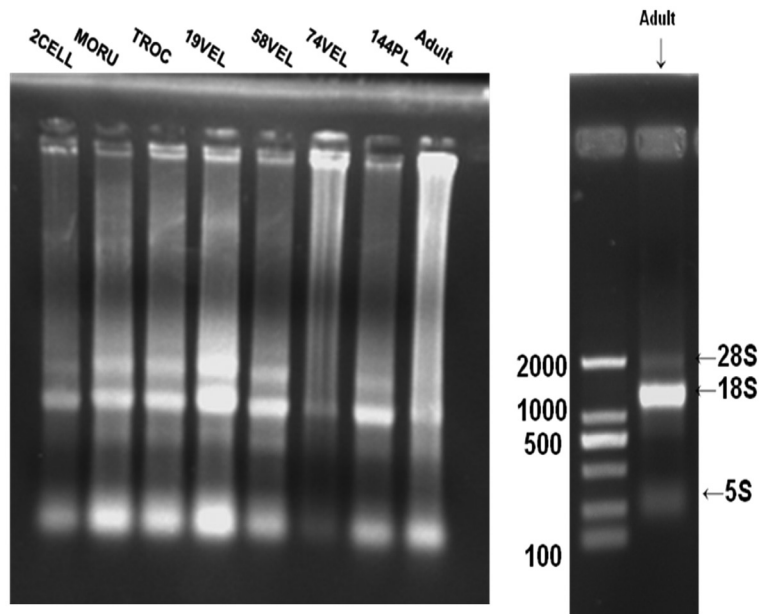
**Stable expression of Y-box protein 1 gene
in early development of abalone *Haliotis diversicolor***

JUN CHEN, ZHI-SEN CHEN, ZI-XIA HUANG, CAI-HUAN KE, JIE ZHANG,
YI-XIANG ZHONG, WEI-WEI YOU, JING ZHAO

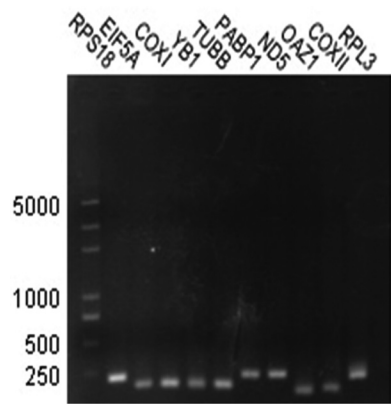
***Address correspondence to:** Jun Chen. State Key Laboratory of Marine Environmental Science, Xiamen University, 422 Siming South Road, Xiamen 361005, China. Tel: +86-592-218-7420. Fax: +86-592-218-7420. e-mail: chenjun@xmu.edu.cn

Full text corresponding to this supplementary material is available at: <http://dx.doi.org/10.1387/ijdb.113487jc>

Accepted: 18 April 2012. *Final, author-corrected PDF published online:* 4 June 2012. *Edited by:* Makoto Asashima



Supplementary Fig. S1. 1.2% agarose-gel (none-denaturing conditions) electrophoresis of total RNA samples. *The 74VEL and Adult samples were locked in the loading cells. We checked Adult sample for a second run and the 28S band of adult RNA was very faint as other mollusks. But the same band was much clearer in larval RNA samples. So we concluded the qualities of larval RNA samples could be at least as good as adult sample.*



Supplementary Fig. S2. qPCR amplicons.