

doi: 10.1387/ijdb.160252af


SUPPLEMENTARY MATERIAL

corresponding to:

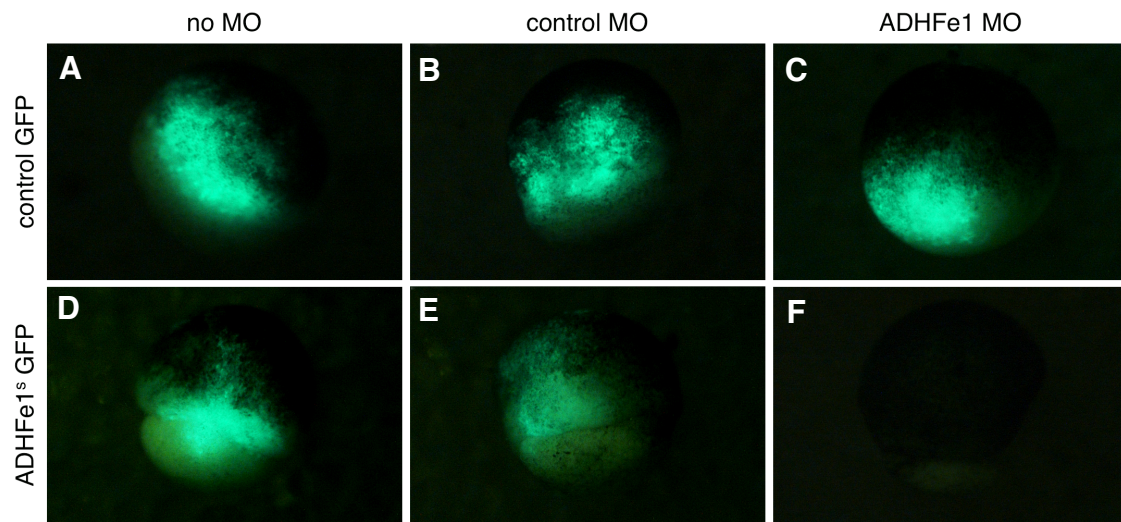
**ADHFe1: a novel enzyme involved in
retinoic acid-dependent *Hox* activation**

YEHUDA SHABTAI, NATALIE SHUKRUN and ABRAHAM FAINSOD*

*Address correspondence to: Abraham Fainsod. Department of Developmental Biology and Cancer Research, Institute for Medical Research Israel-Canada, Faculty of Medicine, The Hebrew University of Jerusalem, Ein Kerem, Jerusalem 9112102, Israel. E-mail: abrahamf@ekmd.huji.ac.il

 <http://orcid.org/0000-0002-6368-0416>

Full text for this paper is available at: <http://dx.doi.org/10.1387/ijdb.160252af>



Supplementary Fig. S1. Specificity controls for the ADHFe1 MO. To demonstrate the specificity of the ADHFe1 MO, embryos were injected with expression plasmids encoding GFP preceded by either the AdhFe1 MO target sequence or a control, Raldh2 MO, site. The embryos were also co-injected with either the ADHFe1 MO or the control MO. The effect on GFP translation was analyzed by fluorescence microscopy. **(A)** Control-GFP plasmid/ no MO; **(B)** tcontrol-GFP plasmid/control MO; **(C)** tcontrol-GFP plasmid/ADHFe1 MO; **(D)** ADHFe1s-GFP plasmid/ no MO; **(E)** tADHFe1s-GFP plasmid/control MO; **(F)** tADHFe1s-GFP plasmid/ ADHFe1 MO.