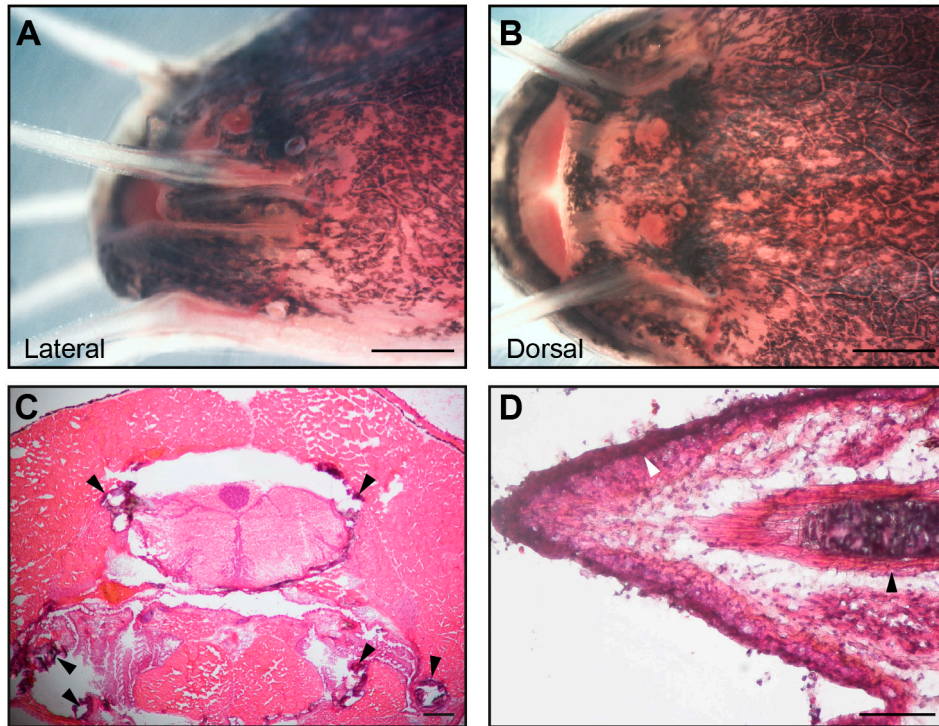


**SUPPLEMENTARY MATERIAL**

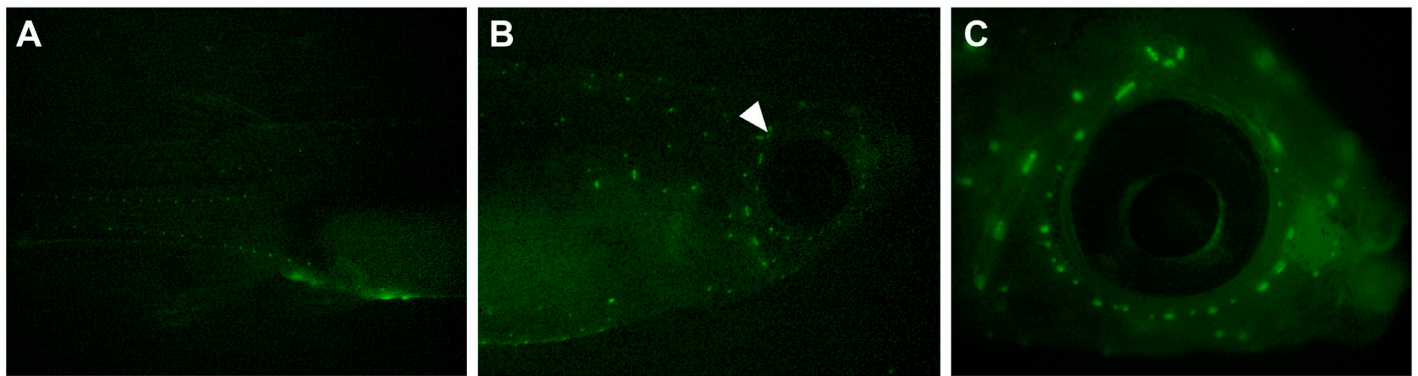
**corresponding to:**

**The subterranean catfish *Phreatobius cisternarum* provides insights into visual adaptations to the phreatic environment**

LOUISE N. PEREZ, BERTHA R. MARILUZ, JAMILY LORENA, AMY LIU, MARCOS P. SOUSA,  
RODRIGO A.P. MARTINS, JOHN S. TAYLOR and PATRICIA N. SCHNEIDER



**Supplementary Fig. S1. *Phreatobius cisternarum*.** Lateral (A) Dorsal (B) view of the head and basal region of the six protruding barbels. Cross section of the head showing the basal region of the six protruding barbels (black arrowheads). (C) Longitudinal section of the maxillary barbel, axial rod of cartilage (black arrowhead) and epidermis (white arrowhead) scale bar 0.1 mm (D).



**Supplementary Fig. S2. *Poecilia reticulata*.** The distribution of superficial neuromasts alongside the lateral line in the trunk (A) and in the anterior lateral line in the head, white arrowhead showing the eye (B). Lateral view of the cephalic neuromasts (C). staining of *P. reticulata* is shown as an example of neuromasts distribution in a surface fish species.

**Supplementary Table S1.** Statistics of *Phreatobius cisternarum* *de novo* RNA-Seq assemblies using Assembly-Stats software.

**Supplementary Table S2.** Quantitative analysis of *Phreatobius cisternarum* *de novo* transcriptome using Actinopterygii datasets from BUSCO software.

**Supplementary Table S3.** Retinal pigment epithelium genes present in the transcriptome of the head of *Phreatobius cisternarum*.

**Supplementary Table S4.** Lens fiber cell genes present in the RNA-Seq of the head of *Phreatobius cisternarum*.

**Supplementary File S1.** Alignment of protein sequence of opsins genes.

**Supplementary File S2.** Alignment of ROM1 protein sequence.

**Supplementary File S3.** Alignment of Pde6 protein sequence.

**Supplementary File S4.** Alignment of Lhx1 protein sequence.

**Supplementary File S5.** Alignment of Gnat1 protein sequence.

**Supplementary File S6.** Alignment of Atp6ap1 protein sequence.

**Supplementary File S7.** Alignment of Crygm3 protein sequence.

**Supplementary File S8.** Alignment of Crygm1 protein sequence.

**Supplementary File S9.** Alignment of Arra3 protein sequence.